

SPECIAL  
ISSUE

NOVEMBER 2013

# House Beautiful

## EXPRESS YOURSELF!

**COLORS  
YOU MUST TRY**

*take your rooms from  
simple to sensational*

**FIND YOUR  
PERFECT  
ROOM SCENT**

**GIFTS THAT  
GIVE BACK**

WE LOVE  
THIS IDEA!  
*see page 100*



\$4.99



**STYLE GURU**  
**CHARLOTTE MOSS**  
*on the Art of Living*



# WHAT'S ON YOUR VANITY?

BETH WEBB

Clean, timeless, and happy...that's what this Atlanta designer believes design should be, and it starts with one of the most personal places at home.

Produced by  
LORA YOON



"My vanity is feminine—but not in a froufrou way. It's tailored, elegant, and edited. I really have to work to keep it that way. I have a collection of photographs above my vanity, the centerpiece being Elliott Erwit's *California Kiss*. I found the midcentury sconces shopping in Italy for a client, but somehow they never quite got them. The vanity itself is Barbara Barry for Baker. I love the classic fluting. It's just a terribly sexy piece. I think there's no greater luxury than sitting down and putting on your makeup at your vanity." **LADY'S DESK BY BARBARA BARRY, RITZ DINING CHAIR BY THOMAS PHEASANT, TRIPTYCH MIRROR BY BILL SOFIELD, ALL FOR BAKER**



"I get more compliments on my skin since I started using **YSL LE TEINT TOUCHE ÉCLAT (\$55)** than anything I've ever done."



"Think about all that daily grime that's on your face. The **CLARISONIC MIA (\$125)** gets everything out of your pores."



"**LA PRAIRIE CELLULAR RADIANCE CREAM BLUSH IN PLUM GLOW (\$70)** is very pink, but it goes on sheer."

"Summers in Atlanta are hot, humid, and sticky. **CRÈME DE LA MER CLEANSING GEL (\$75)** cleans without drying you out!"



"I'm not one to anguish over eye shadow and eyeliner. For everyday, I just use a little **YSL DESSIN DU REGARD CRAYON YEUX HAUTE TENUE IN LEATHER BROWN (\$30)**."

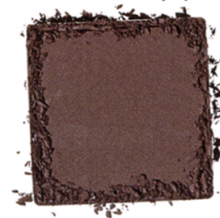


"I've always kept makeup brushes and lip glosses and pencils in silver julep cups." **MARK AND GRAHAM HEXAGONAL MINT JULEP CUP (\$25)**



"When I first smelled **FRÉDÉRIC MALLE PORTRAIT OF A LADY (\$340 FOR 100 ML)**, I thought, I have to wear that! It's exotic yet classic—it makes me think of Istanbul."

"**BOBBI BROWN EYE SHADOW IN SADDLE (\$22)** is a deeper chocolate that I just put in the crease of my eye."



"The diamond dust in **NATURA BISSÉ DIAMOND EXTREME CREAM (\$345)** and **DIAMOND EXTREME EYE (\$202)** refracts light and helps with your collagen. I've noticed a big difference."



PORTRAIT: MALLI ALZIMA; LARA ROBBY/STUDIO D.O.