

ATLANTA HOMESTM *&* LIFESTYLES

blissful BATHS

+ The Report:
*Classic Colors,
Seamless Surfaces
& Top Trends*

JULY 2015
ATLANTAHOMESMAG.COM

\$4.95US



0 09281 03342 4



2015 BATH OF THE YEAR CONTEST
GRAND PRIZE WINNER

GOING FOR GLAM

Simplicity reigns supreme in this 1920s Regency remodel by architect D. Stanley Dixon and designer Beth Webb.

PHOTOGRAPHED BY *Emily Followill*

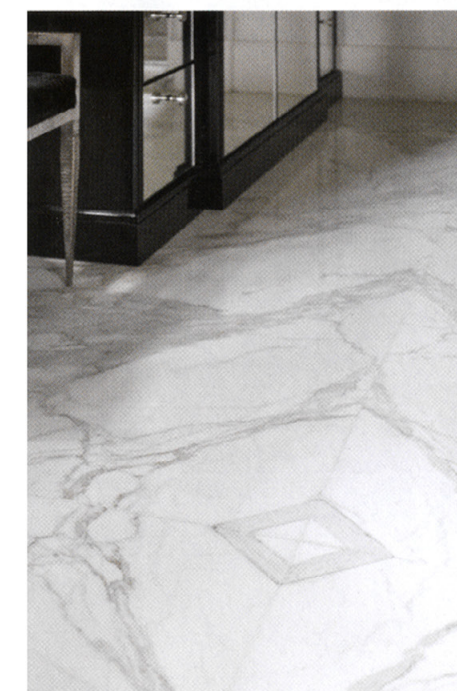
PART OF AN EXQUISITE REMODEL of best-selling author Emily Giffin and husband Buddy Blaha's iconic 1920s Philip Trammell Shutze-designed home, this bath is a fresh take on timeless style, thanks to architect D. Stanley Dixon and interior designer Beth Webb. "We wanted to bring some of the glamour back into the house," says Dixon. Previous renovations featuring stained wood and other heavy elements left the bath feeling dark, so the space was gutted to make way for a fresh, Regency-inspired aesthetic that reflects the couple's youthful style.

This was achieved with mirrored, black-lacquered cabinetry that serves as a striking counterpoint to the crisp, white marble. "There's nothing more dramatic than black and white," says Webb. "It makes such a powerful statement, and to me, it's the ultimate in glamour and elegance." Other reflective surfaces, such as the custom nickel-framed shower door and sparkling plumbing fixtures, add an additional dose of glam.

However, the room's strength lies in its clean lines and edited architecture, a trademark of Regency-style design. While simple inset mirrors grace the vanities, a high-gloss fluted wall provides texture around a sculptural Waterworks tub. The fluting is repeated on the shower seat for a subtle statement. "Stan cared deeply about the details, which is why the bath is so bespoke. It's very couture," says Webb.

In lieu of tiling the floor, Webb and Dixon opted for book-matched marble fabricated by Marmi Natural Stone, which required great technical precision. "The slabs meet in the center to create a diamond pattern, from which everything radiates," says Dixon. "The room was actually designed in a very symmetrical fashion. The tub is centered on the diamond, as are the two vanities and shower door.

This bath feels more architectural than decorated, and that was our goal," he adds. "It was almost an exercise in restraint, making sure there were just a few big strokes that made an impact, as opposed to a lot of little details."



RESOURCES

ARCHITECTURE Stan Dixon, D. Stanley Dixon Architect, Inc. INTERIOR DESIGN Beth Webb, Beth Webb Interiors BUILDER YM Derazi Custom Homes CABINETRY Morgan Creek Cabinet Company TUB & PLUMBING Waterworks MARBLE Marmi Natural Stone STOOL R Hughes SCONCES Barbara Barry for Visual Comfort at Ma Maison.